

ACCESSORIES FOR ASSEMBLY OF BACKER IMMERSION HEATERS

Nut in brass

Dimension	Article no
G1"-NV 38	1140485402
G1½" - NV 55	1140485403
G1½" - NV 60	1140485404
G2" - NV 70	1140485405



Reducing nut in brass

Dimension	Article no
G1½" -G1¼"	1160135701



Gasket

Dimension	Material	Article no
G1¼" - 52x42x2,5 mm	Copper	1140408702
G1½" - 55x48x2,5 mm	Copper	1140408703
G2" - 67,8x60,5x3 mm	Copper	1140408704
G1" - 45x34x2 mm	Fibre	1140577717
G1¼" - 57x42x2 mm	Fibre	1140577704
G2" - 75x60x2 mm	Fibre	1140577706



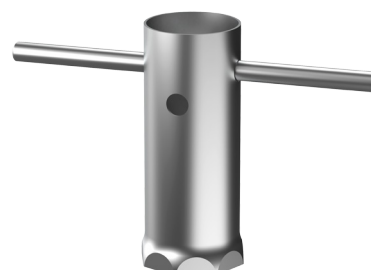
Spacing sleeve with connection parts for adapting of terminal boxes on G2" immersion heaters when extension is required for example at insulating covering

Length	Article no
50 mm	1130692801
100 mm	1130692802
150 mm	1130692803
200 mm	1130692804



Socket key for assembly of G2" heaters

Dimension	Article no
G2" - NV 74	1160143201



ACCESSORIES FOR ASSEMBLY OF BACKER IMMERSION HEATERS



Assembly kit for G2" heaters*

Type	Intended for	Article no
Nr 4	230/400V	1140577001
Nr 8	3x400V	1140577703
Nr 11	IU 20	1140576702

*Contains gasket, connection parts and circuit diagram. Included in delivery of standard heaters

Adaption kit for G1½" heaters*

Dimension	Article no
G1½"-G2"	1140871801

* Contains adapter and fastening rings, screws